



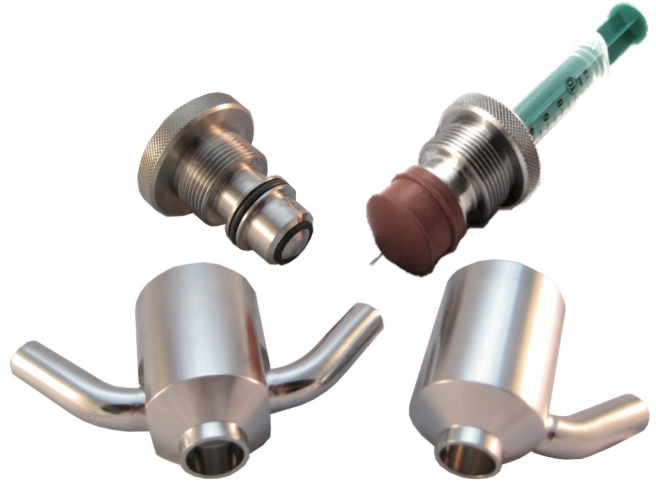
M&S sampling valves are used to take samples of liquids from containers or pipelines. Depending on the purpose of sampling, different sampling systems are used. The properties of the product, the quantity as well as the sampling requirements determine the selection of the suitable sampling valve.

Various designs of sampling valves with different connections are available for most applications in hygienic plants and on containers.

Version with O-Ring or plug



Component parts sampling valves



Usage

Features

Versions

- Sampling valve with O-ring or plug
 - * Taking liquid and viscous samples from containers and pipelines in hygienic installations.
 - * Aeration and deaeration of containers and pipelines in hygienic installations.
 - * Sterile sampling with disposable suction syringe without opening the valve (variant with plug).

Usage

Features

Versions

- Sampling valve with O-Ring and with plug
 - * Front-flush shut-off to the product area.
 - * Dead space free design.
 - * Completely drainable.
 - * Very good cleanability and sterilisability (CIP/SIP).
 - * Flammable (optional O-ring design).
 - * Valve spindle with opening for sampling with disposable suction syringe.
 - * Handwheel with anti-rotation device.



Usage	Features	Versions
-------	----------	----------

- Process connections
 - * Inlet: weld end DN 15 (Ø19x1,5) or DN 40 (Ø41x1,5), with connection elements from the M&S range, others according to customer requirements
 - * Outlet: weld end DN 10 (Ø13x1,5), others according to customers requirements.
 - * Optional cleaning/sterilisation (CIP/SIP): weld end, threaded connection G3/8“.
- Operation
 - * Manual with hand wheel.
- Operation pressure
 - * 10 bar
- Materials
 - * Housing: 1.4301/AISI 304, 1.4404/AISI 316L, other stainless steels, titanium or hastelloy.
 - * Gaskets O-ring version: VMQ, EPDM, FKM (flammable), FDA compliant.
 - * Gaskets plug version: VMQ, EPDM.
- Surfaces
 - * In contact with product $Ra \leq 0,8 \mu m$
 - * Not in contact with product $Ra \leq 1,6 \mu m$
- Operating temperature
 - * Depending on gasket material

Examples of different versions

Sampling valve with O-Ring

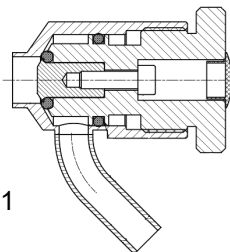


Fig. 1

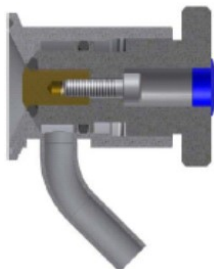


Fig. 2

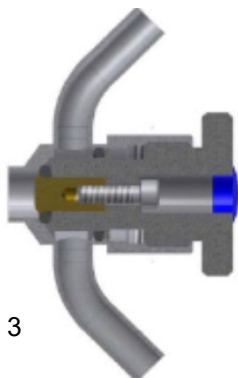


Fig. 3

Sampling valve with plug

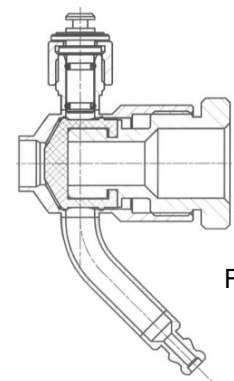


Fig. 4

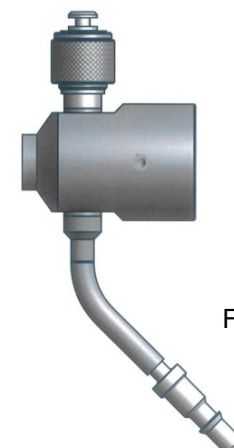


Fig. 5

- Standard version (fig. 1)
 - * Weld end connection DN 15 (Ø19x1,5).
 - * Outlet weld end DN 10 (Ø13x1,5).
- Clamping version (fig. 2)
 - * Clamp connection DN 25 DIN 32676.
 - * Outlet weld end DN 10 (Ø13x1,5).
- CIP/SIP version (fig. 3)
 - * Weld end connection DN 15 (Ø19x1,5).
 - * Outlet weld end DN 10 (Ø13x1,5).
 - * Connection CIP/SIP weld end DN 10 (Ø13x1,5).
- CIP/SIP version (fig. 4)
 - * Weld end connection DN 15 (Ø19x1,5).
 - * Outlet connection DN 10 (Ø13x1,5) with transition to push-in connection.
 - * Connection CIP/SIP screw connection G3/8“ with flush closing plug.
- CIP/SIP housing for sampling valve with plug or with O-Ring (fig. 5)
 - * Weld end connection DN 15 (Ø19x1,5).
 - * Outlet weld end DN 6 (Ø8x1) with transition to Stäubli plug-in connection.
 - * Connection CIP/SIP screw connection G3/8“ with flush closing plug.