

# VINLONG INOX

We are connecting the world

VINLONG STAINLESS STEEL (VIETNAM) CO., LTD

Stainless Steel Tubes & Pipes Producer





**WE CARE, WE GROW TOGETHER  
PRECISION - INTEGRITY**



## Table of contents

Message from President	4
Company History	6
About Us	7
Manufacturing Process	8
The Production Innovator	10
Quality Assurance	12
Product	14
Application	15
Specification	16
Extensive distribution system	30



## MESSAGE FROM PRESIDENT

我们的理念：企业·客户·供应商·相互支持·让每一个环节都赚钱·实现共赢；企业·股东·员工·三位一体·让每一位同事实现自己的价值·与企业共同进步·共同发展！

Triết lý kinh doanh của chúng tôi là: Doanh nghiệp, Khách hàng và Nhà cung cấp – chúng ta hỗ trợ lẫn nhau, để mọi kết nối mang đến những giá trị thiết thực, đạt được kết quả đôi bên cùng có lợi. Bên cạnh đó, doanh nghiệp, cổ đông, và nhân viên đều phải đoàn kết. Mỗi cá nhân hãy nhận thức được giá trị của mình, cùng nhau hợp sức, cố gắng và phát triển.

Our philosophy is: Company, customers and suppliers, we support each other, so that every connection brings practical values, achieving results that are win-win circumstances. In addition, company, shareholders and employees must be united. Each individual is aware of their values, working together, trying and developing.

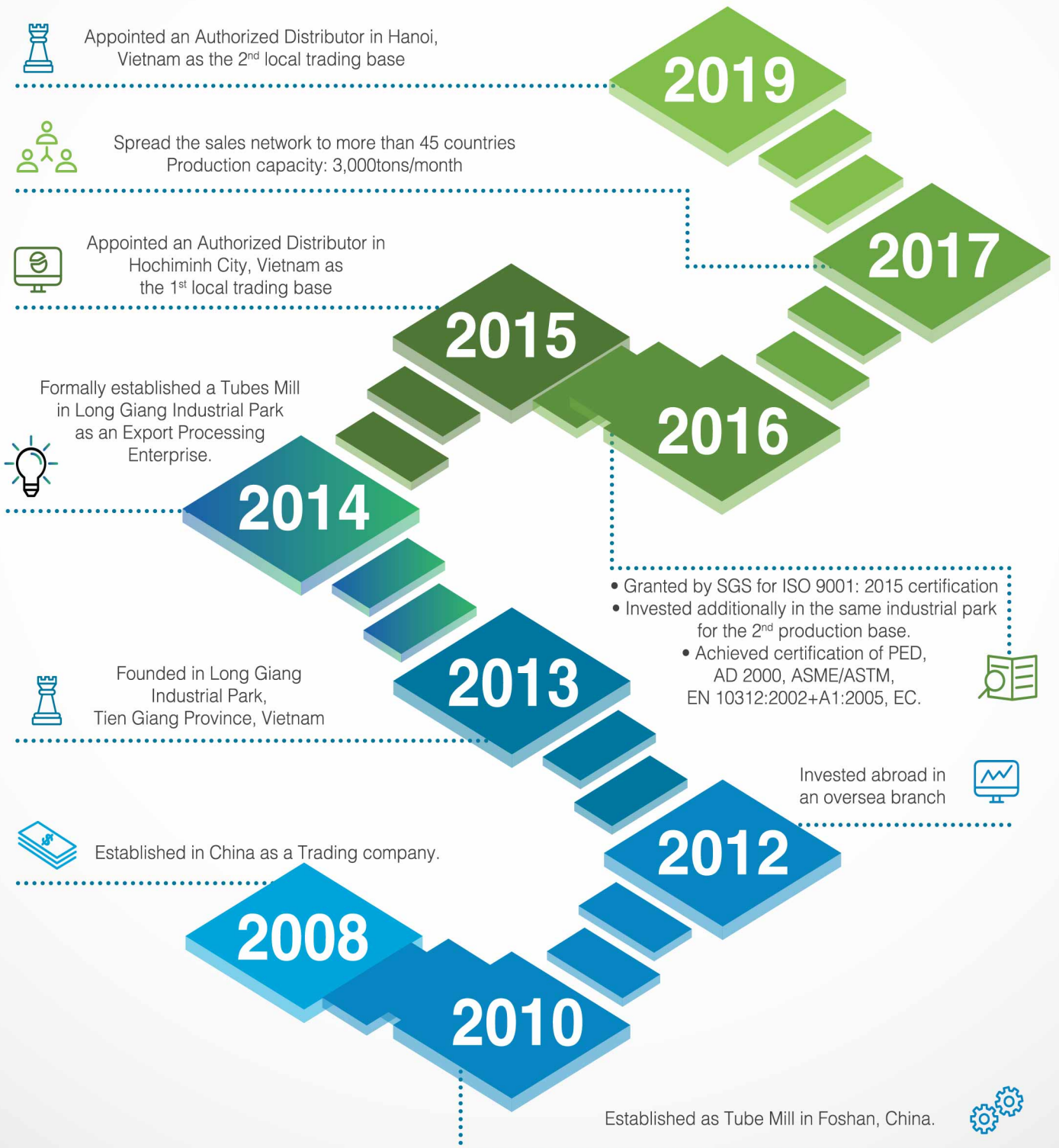






# COMPANY HISTORY

## LỊCH SỬ HÌNH THÀNH





# ABOUT US

## VỀ CHÚNG TÔI



Vinlong là một trong những nhà sản xuất ống và ống dẫn thép không gỉ năng động hàng đầu Việt Nam.

Chúng tôi tự hào là người tiên phong trong việc cải tiến từ dây chuyền sản xuất, đến chất lượng phục vụ. Chúng tôi không ngừng tự hoàn thiện để đáp ứng nhu cầu và mong đợi của thị trường.

Vinlong nằm ở vị trí thuận lợi giao thương của Châu Á mở rộng ra thế giới, hiện chúng tôi đã và đang xuất khẩu đến 49 nước ở khắp các châu lục,

Mục tiêu hàng đầu của chúng tôi là đảm bảo sự hài lòng của khách hàng thông qua việc liên lạc thường xuyên và có chiến lược riêng cho từng thị trường, nhận diện các điểm mạnh để phát huy.

Vinlong is one of the leading motivate, and well establishment stainless steel tubes and pipes manufacturer in Vietnam.

We are proud to be the pioneer in improving the production line, to service quality. We constantly improve ourselves to meet the needs and expectations of the market.

Vinlong stands on the heart of Asia, toward to the worldwide, currently we have been exporting to 49 countries all over the world, none of each country has occupied more than 5% in our total productivities.

Our top goal is to ensure customer satisfaction via communication with actual support of specific strategies for each market, identifying strengths to promote.

*It's not just the product.*

*For Vinlong, we pay attention to*

*Distribution channel,*

*Relationship with customers.*

*No work has been missed*

*For Vinlong, we serve*

*The system responds within 24 hours*

*Contact point specified*

*Technical consulting services*

*Ensure on-time delivery*

*Manufactured according to customer requirements.*



*Không đơn thuần chỉ là sản phẩm.*

*Đối với Vinlong, chúng tôi chú trọng,*

*Kênh phân phối,*

*Mối quan hệ với khách hàng.*

*Không có việc nào bị bỏ lỡ*

*Đối với Vinlong, dịch vụ của chúng tôi*

*Hệ thống hồi đáp trong vòng 24 giờ*

*Đầu mối liên lạc được chỉ định*

*Tư vấn kỹ thuật*

*Đảm bảo giao hàng đúng hạn*

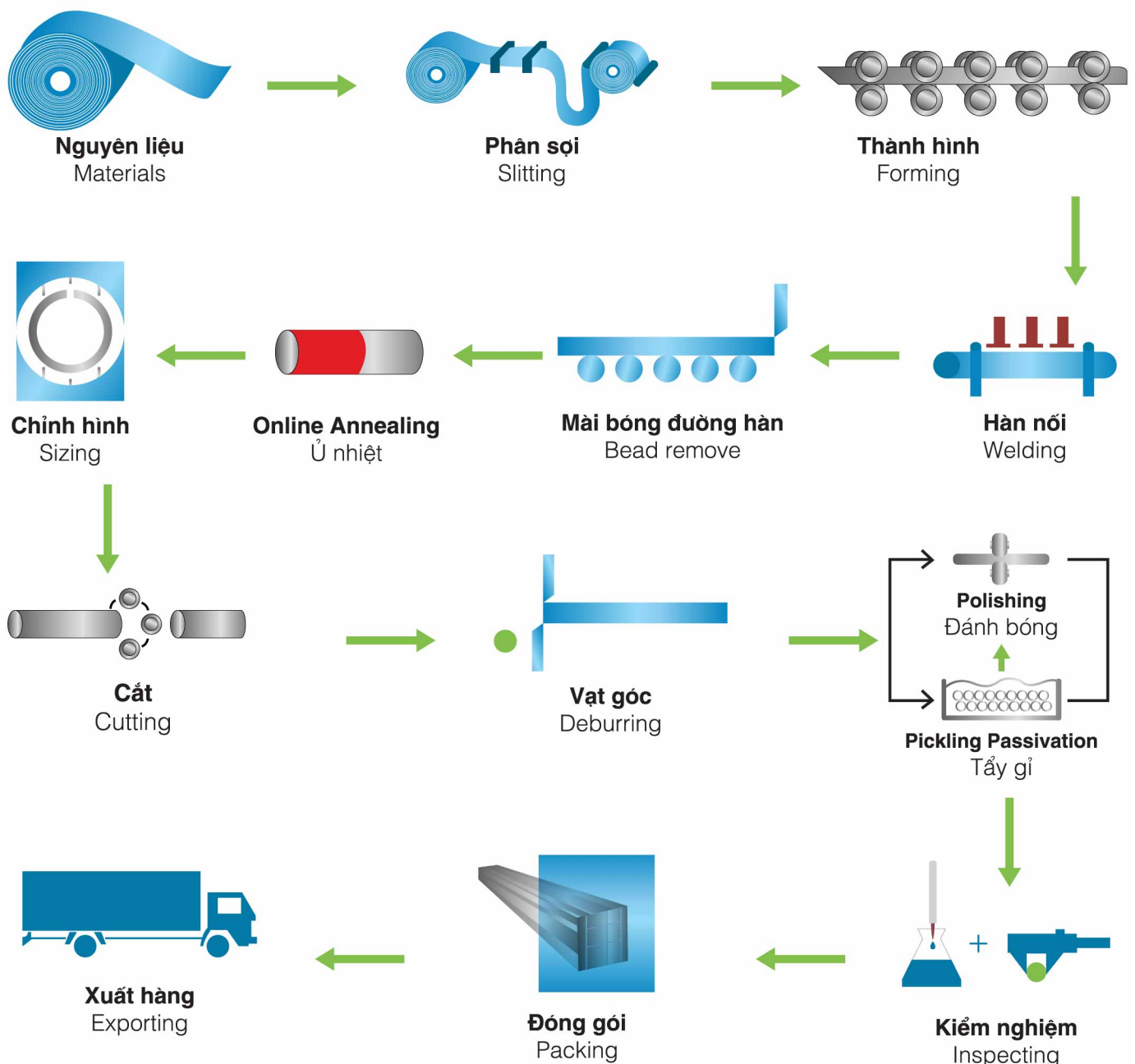
*Sản xuất theo yêu cầu khách hàng.*



# MANUFACTURING PROCESS

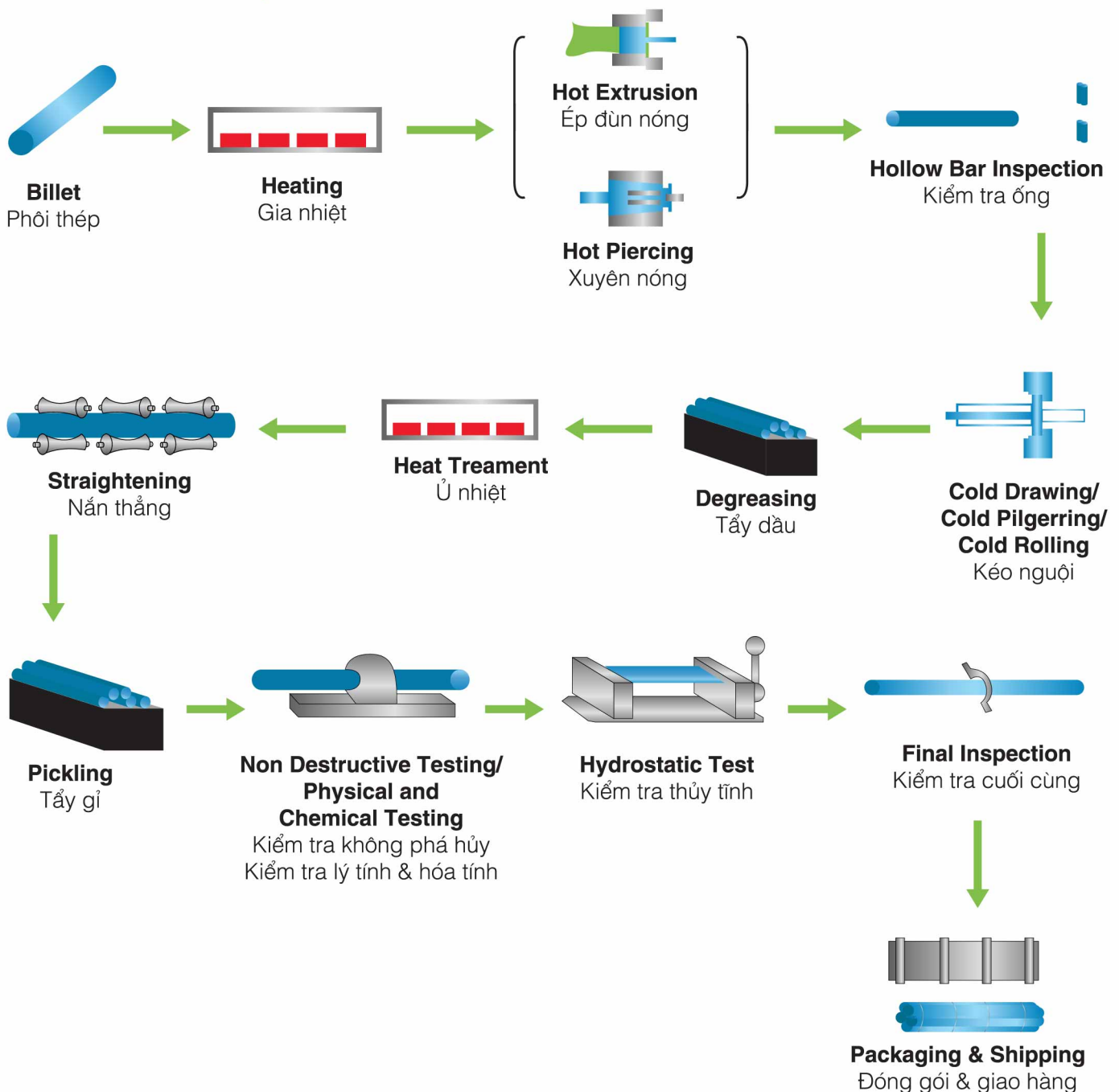
## QUY TRÌNH SẢN XUẤT

### Manufacturing process for Stainless Steel Seamed Tubes/Pipes





# Manufacturing process for Stainless Steel Seamless Pipes



# THE PRODUCTION INNOVATOR

---

Vinlong stand for Precision and Integrity, respect for the individual commitments, customer satisfaction and continuous improvement. Above all, we stand for you.

## OFFICE

---



## FACTORY OVERVIEW

---



## SLITTING MACHINE

---





## TUBE FORMING MACHINE



## POLISHING MACHINE



## PACKING SECTION



## WAREHOUSE





# QUALITY ASSURANCE

Excellence in quality is our commitment along with proactive support and service, we believe in dynamic growth and keep on innovating to become one of the leaders.



## LABORATORY



**WHOLE VIEW**



**CHEMICAL LABORATORY**



**MECHANICAL LABORATORY**



**QC IN LINE**



**TESTING AT LAB**







# CERTIFICATION

**CERTIFICATE**  
 In accordance with the requirements of AD 2000 Standard 9701.  
 The Lloyd's Register Quality Assurance System of Management Systems, Approved for the Manufacture of Stainless Steel Pipes, Tubes and Fittings, has been approved for the manufacture of:

**VINLING STAINLESS STEEL CO., LTD.**  
 No. 20, 1/F Block 9, International Metal Trading Center, Lamhi, Foshan City, Guangdong Province, China

With the manufacturer's No. **VINLING STAINLESS STEEL CO., LTD.**  
 Lot 81C, 131C, 131D Long Giang Industrial Park, Tan Lap 1 Commune, Tan Phuoc District, Tan Giang Province, Vietnam

**Special Assessment for Materials**  
 by 13 December 2018. The 13 December 2018 assessment of the compliance of the above-mentioned manufacturer with the requirements of the AD 2000 Standard 9701, in relation to the manufacture of stainless steel pipes, tubes and fittings, is subject to the manufacturer's compliance with the requirements of the AD 2000 Standard 9701, in relation to the manufacture of stainless steel pipes, tubes and fittings.

Approval is granted by the registered manufacturer of the quality system in accordance with the requirements of the above-mentioned Standard.

Valid until: 23 December 2020  
 Issued by: Lloyd's Register Quality Assurance (Singapore) Co., Ltd.

**Lloyd's Register Standard Code: LR 9225**  
 LR 9225 (2018)

AD 2000

**ANNEX I OF CERTIFICATE No. 92066/A1 dated 27th December 2018**  
 Annex I is an integral part of the certificate.

No.	Product	Material/Process	Designated scope of responsibility
1	131D, 131C, 131A	1.31D, 1.31C, 1.31A 1.31D, 1.31C, 1.31A	1.31D, 1.31C, 1.31A 1.31D, 1.31C, 1.31A

**Lloyd's Register Standard Code: LR 9225**  
 LR 9225 (2018)

Number: 27 December 2018

AD 2000

**CERTIFICATE**  
 FOR PRODUCT CONFORMITY

Certificate No.: 92464/07

Name and address of the Company:  
 VINLING STAINLESS STEEL CO., LTD.  
 No. 20, 1/F Block 9, International Metal Trading Center, Lamhi, Foshan City, Guangdong Province, China

Name and address of the Manufacturing Plant:  
 VINLING STAINLESS STEEL CO., LTD.  
 Lot 81C, 131C, 131D Long Giang Industrial Park, Tan Lap Commune, Tan Phuoc District, Tan Giang Province, Vietnam

The certificate that the Manufacturing Plant of the above company has been approved for approval of the product family for the Pressure Equipment (Safety) Regulations (SEPR) 2014/68/EU and the Pressure Equipment (Safety) Regulations (SEPR) 2014/68/EU, in relation to the manufacture of stainless steel pipes, tubes and fittings, is subject to the manufacturer's compliance with the requirements of the AD 2000 Standard 9701, in relation to the manufacture of stainless steel pipes, tubes and fittings.

Approval is granted by the registered manufacturer of the quality system in accordance with the requirements of the above-mentioned Standard.

Valid until: 23 December 2020  
 Issued by: Lloyd's Register Quality Assurance (Singapore) Co., Ltd.

ASME.ASTM

**Certificate of Approval**  
 Vinling Stainless Steel Co., Ltd.

This is to certify that the Management System of the above company has been approved for approval of the product family for the Pressure Equipment (Safety) Regulations (SEPR) 2014/68/EU and the Pressure Equipment (Safety) Regulations (SEPR) 2014/68/EU, in relation to the manufacture of stainless steel pipes, tubes and fittings, is subject to the manufacturer's compliance with the requirements of the AD 2000 Standard 9701, in relation to the manufacture of stainless steel pipes, tubes and fittings.

Approval is granted by the registered manufacturer of the quality system in accordance with the requirements of the above-mentioned Standard.

Valid until: 23 December 2020  
 Issued by: Lloyd's Register Quality Assurance (Singapore) Co., Ltd.

ISO 9001 2015

**STATEMENT OF COMPLIANCE**

This statement is issued in accordance with the Quality Management System of the Applicant: **Vinling Stainless Steel Co., Ltd.**  
 No. 20, 1/F Block 9, International Metal Trading Center, Lamhi, Foshan City, Guangdong Province, People's Republic of China  
 Manufacturer: **Vinling Stainless Steel (Viet Nam) Co., Ltd.**  
 Lot 81C, 131C, 131D, Long Giang IP, Tan Lap 1 Commune, Tan Phuoc District, Tan Giang Province, Vietnam

has been assessed by Lloyd's Register Quality Assurance for compliance with the requirements of the AD 2000 Standard 9701, in relation to the manufacture of stainless steel pipes, tubes and fittings.

**EU Regulation No. 395/2011**  
 The assessment was based on:

**ISO 9001:2015**  
 The Quality Management System of the Applicant for the manufacture of stainless steel pipes, tubes and fittings.

This statement is valid only in conjunction with the certificate which bears the same number and which is issued by Lloyd's Register Quality Assurance (Singapore) Co., Ltd.

Valid until: 23 December 2020  
 Issued by: Lloyd's Register Quality Assurance (Singapore) Co., Ltd.

EN 10312 CERTIFICATE

**STATEMENT SCHEDULE**

The manufacturer of the product has been assessed by Lloyd's Register Quality Assurance for compliance with the requirements of the AD 2000 Standard 9701, in relation to the manufacture of stainless steel pipes, tubes and fittings.

Applicant: **Vinling Stainless Steel Co., Ltd.**  
 No. 20, 1/F Block 9, International Metal Trading Center, Lamhi, Foshan City, Guangdong Province, People's Republic of China

Manufacturer: **Vinling Stainless Steel (Viet Nam) Co., Ltd.**  
 Lot 81C, 131C, 131D, Long Giang IP, Tan Lap 1 Commune, Tan Phuoc District, Tan Giang Province, Vietnam

Product description: **Welded stainless steel tubes for the manufacture of pipes and other stainless steel parts.**

Steel Number: **1.4401, 1.4402, 1.4403, 1.4404**

The following standards are applied to the products:

EN 10217-2:2015  
 EN 10217-2:2015  
 EN 10217-2:2015

Approval is granted by the registered manufacturer of the quality system in accordance with the requirements of the above-mentioned Standard.

Valid until: 23 December 2020  
 Issued by: Lloyd's Register Quality Assurance (Singapore) Co., Ltd.

EN 10312 CERTIFICATE

**EC Certificate of Quality System Approval**

In accordance with the requirements of the Pressure Equipment (Safety) Regulations (SEPR) 2014/68/EU and the Pressure Equipment (Safety) Regulations (SEPR) 2014/68/EU, in relation to the manufacture of stainless steel pipes, tubes and fittings, is subject to the manufacturer's compliance with the requirements of the AD 2000 Standard 9701, in relation to the manufacture of stainless steel pipes, tubes and fittings.

Approval is granted by the registered manufacturer of the quality system in accordance with the requirements of the above-mentioned Standard.

Valid until: 23 December 2020  
 Issued by: Lloyd's Register Quality Assurance (Singapore) Co., Ltd.

PED 2014.68.EU

**Certificate of Approval**  
 Vinling Stainless Steel Co., Ltd.

This is to certify that the Management System of the above company has been approved for approval of the product family for the Pressure Equipment (Safety) Regulations (SEPR) 2014/68/EU and the Pressure Equipment (Safety) Regulations (SEPR) 2014/68/EU, in relation to the manufacture of stainless steel pipes, tubes and fittings, is subject to the manufacturer's compliance with the requirements of the AD 2000 Standard 9701, in relation to the manufacture of stainless steel pipes, tubes and fittings.

Approval is granted by the registered manufacturer of the quality system in accordance with the requirements of the above-mentioned Standard.

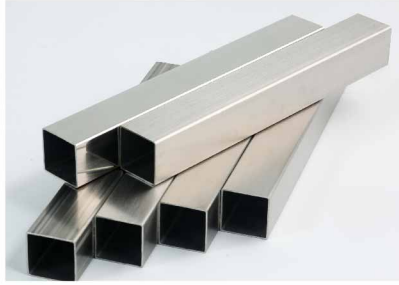
Valid until: 23 December 2020  
 Issued by: Lloyd's Register Quality Assurance (Singapore) Co., Ltd.

ISO 14001 - 45001

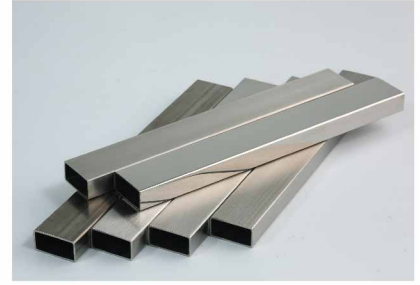
# PRODUCT SẢN PHẨM



**ROUND TUBE**



**SQUARE TUBE**



**RECTANGULAR TUBE**



**ASTM A554**

Wide usage of Decorative stainless tubing



**ASTM A249/A269/A270**

Stainless Steel Tubes/Pipes for boiler, heat exchanger  
Stainless Steel Sanitary Tubes/Pipes



**ASTM A312/A778**

Stainless Steel Pipes  
Oil/Gas/Refinery Plants



**ASTM A554**

Stainless Steel Structural Tubes



**EN 10217-7, EN 10357**

Stainless Steel Tubes/Pipes for pressure purposes



**STAINLESS STEEL SEAMLESS PIPES**

ASTM A312 (ASME B36.19M/ASME B36.10M), EN10216-5



# APPLICATION

## ỨNG DỤNG



**SQUARE TUBE AND EMBOSSED  
TUBE FOR HANDRAIL**



**VARIOUS TYPES OF TUBE FOR  
STAIRWAY**



**TUBES FOR DAIRY PLANT**



**TUBES FOR HEAT EXCHANGER**



**TUBES FOR FOOD INDUSTRY**



**INDUSTRIAL PIPES FOR OIL INDUSTRY**



**STRUCTURAL TUBES FOR MILK FACTORY**



**STRUCTURAL TUBES FOR CONVEYOR**



**STRUCTURAL TUBES FOR CONSTRUCTION**

# SPECIFICATION

## QUY CÁCH

### STAINLESS STEEL TUBES FOR MECHANICAL AND STRUCTURAL PURPOSES

• ASTM A554, GB/T 12770, JG/T 3030, YB/T 5363

Thickness		0.40	0.60	0.70	0.80	0.90 0.89	1.00	1.07	1.20 1.24	1.50	1.65	2.00 2.11	2.50	2.70	3.00 3.05	3.50	6.00
Outside Diameter	GA					20GA		19GA	18GA		16GA	14GA			11GA		
	INCH MM																
	6.00	◇	◇	◇	◇	◇	◇										
	8.00	◇	◇	◇	◇	◇	◇										
3/8 / -	9.53/10.00	◇	◇	◇	◇	◇	◇	◇	◇								
- / 1/2	12.0/12.7	◇	◇	◇	◇	◇	◇	◇	◇	◇							
	14.00		◇	◇	◇	◇	◇	◇	◇	◇							
	15.00		◇	◇	◇	◇	◇	◇	◇	◇	◇						
5/8 / -	15.9/15.88/16.0		◇	◇	◇	◇	◇	◇	◇	◇	◇	◇					
	17.00/17.20		◇	◇	◇	◇	◇	◇	◇	◇	◇	◇					
	18.00		◇	◇	◇	◇	◇	◇	◇	◇	◇	◇					
	19.00/19.05		◇	◇	◇	◇	◇	◇	◇	◇	◇	◇					
	20.00		◇	◇	◇	◇	◇	◇	◇	◇	◇	◇					
	21.30		◇	◇	◇	◇	◇	◇	◇	◇	◇	◇					
	22.00/22.23		◇	◇	◇	◇	◇	◇	◇	◇	◇	◇					
	24.20		◇	◇	◇	◇	◇	◇	◇	◇	◇	◇					
- / 1	25.0/25.4		◇	◇	◇	◇	◇	◇	◇	◇	◇	◇	◇				
	26.90				◇	◇	◇	◇	◇	◇	◇	◇	◇				
- / 1 1/8	28.0/28.6				◇	◇	◇	◇	◇	◇	◇	◇	◇				
	30.00				◇	◇	◇	◇	◇	◇	◇	◇	◇	◇			
1 1/4	31.75/31.8/32.0				◇	◇	◇	◇	◇	◇	◇	◇	◇	◇			
	33.70				◇	◇	◇	◇	◇	◇	◇	◇	◇	◇			
	35.00				◇	◇	◇	◇	◇	◇	◇	◇	◇	◇	★		
	36.00				◇	◇	◇	◇	◇	◇	◇	◇	◇	◇	★		
1 1/2	38.00/38.10				◇	◇	◇	◇	◇	◇	◇	◇	◇	◇	★		
	40.00				◇	◇	◇	◇	◇	◇	◇	◇	◇	◇	★		
1 5/8	41.26				◇	◇	◇	◇	◇	◇	◇	◇	◇	◇	★		
	42.40				◇	◇	◇	◇	◇	◇	◇	◇	◇	◇	★		
	43.00				◇	◇	◇	◇	◇	◇	◇	◇	◇	◇	★		
1 3/4	44.45/45.00				◇	◇	◇	◇	◇	◇	◇	◇	◇	◇	★		
	48.0/48.3				◇	◇	◇	◇	◇	◇	◇	◇	◇	◇	★		
- / 2	50.0/50.8				◇	◇	◇	◇	◇	◇	◇	◇	◇	◇	★		
	54.00				◇	◇	◇	◇	◇	◇	◇	◇	◇	◇	★		
	56.00				◇	◇	◇	◇	◇	◇	◇	◇	◇	◇	★		
	57.00				◇	◇	◇	◇	◇	◇	◇	◇	◇	◇	★		
	60.30				◇	◇	◇	◇	◇	◇	◇	◇	◇	◇	★		
2 1/2	63.50				◇	◇	◇	◇	◇	◇	◇	◇	◇	◇	★		
	70.00				◇	◇	◇	◇	◇	◇	◇	◇	◇	◇	★		
	73.00				◇	◇	◇	◇	◇	◇	◇	◇	◇	◇	★		
3	76.20				◇	◇	◇	◇	◇	◇	◇	◇	◇	◇	★		
	80.00						◇	◇	◇	◇	◇	◇	◇	◇	★		
	83.00						◇	◇	◇	◇	◇	◇	◇	◇	★		
	86.90								◇	◇	◇	◇	◇	◇	★		
3 1/2	88.90								◇	◇	◇	◇	◇	◇	★		
	96.00								◇	◇	◇	◇	◇	◇	★		
4	101.60									◇	◇	◇	◇	◇	★		
	114.00/114.30									◇	◇	◇	◇	◇	★		
5	127.00									◇	◇	◇	◇	◇	★		
6	152.40										◇	◇	◇	◇	★	★	
	168.00/168.28											◇	◇	◇	★	★	★
8	203.00											◇	◇	◇	★	★	★
	219.00/219.10											◇	◇	◇	★	★	★
10	254.00												**	**	**	**	**
	273.00/273.05													**	**	**	**
	323.85														**	**	**

Remark

- Marking: Within The Production Capability  
 - The Other Outside Diameter and Wall Thickness Subject To The Approval Of Vendor And Purchaser.  
 - Cold Roll Material: Thickness 0.4~3.0mm  
 - Hot Roll Material: Thickness 2.0~6.0mm  
 (◇): Polish 180G/320G/400G/600G (★): Polish 180G (★★): Mill Finish/MF

• Application: It is widely used on machinery, medical devices, sport and fitness equipment, coatings, high-speed trains, automotive, furniture, interior decorations etc.



## STAINLESS STEEL WELDED SQUARE TUBES

• ASTM A554, GB/T 12770, JG/T 3030, YB/T 5363

Thickness Outside Diameter		0.50	0.60	0.70	0.80 0.89	0.90	1.00	1.07	1.20	1.24	1.50	1.65	2.00 2.11	2.50	2.70 2.77	3.00 3.05	4.00	4.50 4.55	5.00	6.00 6.35	7.00	8.00
					20GA			19GA		18GA		16GA	14GA		12GA	11GA		11GA		11GA		
INCH	MM																					
	10.00×10.00	◇	◇	◇	◇	◇	◇	◇	◇													
	12.00×12.00	◇	◇	◇	◇	◇	◇	◇	◇	◇												
1/2×1/2	12.70×12.70	◇	◇	◇	◇	◇	◇	◇	◇	◇												
	15.00×15.00	◇	◇	◇	◇	◇	◇	◇	◇	◇	◇											
5/8×5/8	15.88×15.88	◇	◇	◇	◇	◇	◇	◇	◇	◇	◇											
3/4×3/4	19.05×19.05	◇	◇	◇	◇	◇	◇	◇	◇	◇	◇	◇	◇	◇	◇	*						
	20.00×20.00			◇	◇	◇	◇	◇	◇	◇	◇	◇	◇	◇	◇							
7/8×7/8	22.23×22.23			◇	◇	◇	◇	◇	◇	◇	◇	◇	◇	◇	◇	*						
	25.00×25.00			◇	◇	◇	◇	◇	◇	◇	◇	◇	◇	◇	◇	*						
1×1	25.40×25.40			◇	◇	◇	◇	◇	◇	◇	◇	◇	◇	◇	◇	*						
	30.00×30.00			◇	◇	◇	◇	◇	◇	◇	◇	◇	◇	◇	◇	*						
1-1/4×1-1/4	31.75×31.75			◇	◇	◇	◇	◇	◇	◇	◇	◇	◇	◇	◇	*						
	35.00×35.00			◇	◇	◇	◇	◇	◇	◇	◇	◇	◇	◇	◇	*						
	38.00×38.00			◇	◇	◇	◇	◇	◇	◇	◇	◇	◇	◇	◇	*	*					
1-1/2×1-1/2	38.10×38.10			◇	◇	◇	◇	◇	◇	◇	◇	◇	◇	◇	◇	*	*					
	40.00×40.00						◇	◇	◇	◇	◇	◇	◇	◇	◇	*	*					
	44.45×44.45						◇	◇	◇	◇	◇	◇	◇	◇	◇	*	*					
	45.00×45.00						◇	◇	◇	◇	◇	◇	◇	◇	◇	*	*					
	50.00×50.00						◇	◇	◇	◇	◇	◇	◇	◇	◇	*	*	*	*	*		
2×2	50.80×50.80						◇	◇	◇	◇	◇	◇	◇	◇	◇	*	*	*	*	*		
	60.00×60.00							◇	◇	◇	◇	◇	◇	◇	◇	*	*	*	*	*		
	63.00×63.00							◇	◇	◇	◇	◇	◇	◇	◇	*	*	*	*	*		
2-1/2×2-1/2	63.50×63.50							◇	◇	◇	◇	◇	◇	◇	◇	*	*	*	*	*		
	70.00×70.00								◇	◇	◇	◇	◇	◇	◇	*	*	*	*	*		
	75.00×75.00								◇	◇	◇	◇	◇	◇	◇	*	*	*	*	*		
3×3	76.20×76.20								◇	◇	◇	◇	◇	◇	◇	*	*	*	*	*		
	80.00×80.00								◇	◇	◇	◇	◇	◇	◇	*	*	*	*	*		
3-1/2×3-1/2	88.90×88.90								◇	◇	◇	◇	◇	◇	◇	*	*	*	*	*		
	100.00×100.00								◇	◇	◇	◇	◇	◇	◇	*	*	*	*	*		
4×4	101.60×101.60								◇	◇	◇	◇	◇	◇	◇	*	*	*	*	*		
	120.00×120.00											◇	◇	◇	◇	*	*	*	*	*		
5×5	127.00×127.00												◇	◇	◇	*	*	*	*	*	*	*
	150.00×150.00													◇	◇	*	*	*	*	*	*	*
	152.40×152.40													◇	◇	*	*	*	*	*	*	*
	200.00×200.00													◇	◇	*	*	*	*	*	*	*
	203.20×203.20													◇	◇	*	*	*	*	*	*	*

Remark

- Marking: Within The Production Capability  
 - The Other Outside Diameter and Wall Thickness Subject To The Approval Of Vendor And Purchaser.  
 - Cold Roll Material: Thickness 0.4~3.0mm  
 - Hot Roll Material: Thickness 2.0~6.0mm  
 (◇): Polish 180G/320G/400G/600G    (\*): Polish 180G    (\*\*): Mill Finish/MF

• Application: It is widely used on machinery, medical devices, sport and fitness equipment, coatings, high-speed trains, automotive, furniture, interior decorations etc.

# STAINLESS STEEL WELDED RECTANGULAR TUBES

- ASTM A554, GB/T 12770, JG/T 3030, YB/T 5363

Thickness Outside Diameter		0.80	0.90	1.00	1.07	1.20	1.24	1.50	1.65	2.00	2.50	2.70	3.00	4.00	4.50	5.00	6.00	6.30	7.00	8.00	9.53	
		0.89																	6.35			
INCH	MM	20GA			19GA		18GA		16GA	14GA		12GA	11GA		7GA							
	10.00x20.00	◇	◇	◇	◇	◇	◇	◇														
	10.00x25.00	◇	◇	◇	◇	◇	◇	◇														
	10.00x30.00	◇	◇	◇	◇	◇	◇	◇														
	10.00x40.00	◇	◇	◇	◇	◇	◇	◇														
	10.00x50.00			◇	◇	◇	◇	◇														
	10.00x60.00			◇	◇	◇	◇	◇														
	10.00x80.00					◇	◇	◇														
1/2x1	12.70x25.40			◇	◇	◇	◇	◇														
1/2x1 1/4	12.70x31.75			◇	◇	◇	◇	◇														
1/2x1 1/2	12.70x38.10			◇	◇	◇	◇	◇														
1/2x2	12.70x50.80			◇	◇	◇	◇	◇														
1/2x3	12.70x76.20			◇	◇	◇	◇	◇														
	15.00x20.00			◇	◇	◇	◇	◇	◇	◇												
	15.00x25.00			◇	◇	◇	◇	◇	◇	◇												
	15.00x30.00			◇	◇	◇	◇	◇	◇	◇												
	15.00x35.00			◇	◇	◇	◇	◇	◇	◇												
	15.00x40.00			◇	◇	◇	◇	◇	◇	◇												
	15.00x50.00			◇	◇	◇	◇	◇	◇	◇												
3/4x1 1/2	19.05x38.10			◇	◇	◇	◇	◇	◇	◇	◇	◇	◇	*								
	20.00x30.00			◇	◇	◇	◇	◇	◇	◇												
	20.00x40.00			◇	◇	◇	◇	◇	◇	◇	◇	◇										
	20.00x50.00			◇	◇	◇	◇	◇	◇	◇	◇	◇										
	20.00x60.00			◇	◇	◇	◇	◇	◇	◇	◇	◇										
	20.00x70.00			◇	◇	◇	◇	◇	◇	◇	◇	◇										
	20.00x80.00			◇	◇	◇	◇	◇	◇	◇	◇	◇										
	25.00x13.00			◇	◇	◇	◇	◇	◇	◇												
	25.00x30.00			◇	◇	◇	◇	◇	◇	◇												
	25.00x38.00			◇	◇	◇	◇	◇	◇	◇												
	25.00x50.00			◇	◇	◇	◇	◇	◇	◇	◇	◇	*									
	25.00x75.00			◇	◇	◇	◇	◇	◇	◇	◇	◇	*									
1x1 1/2	25.40x38.10			◇	◇	◇	◇	◇	◇	◇	◇	◇	*									
1x2	25.40x50.80			◇	◇	◇	◇	◇	◇	◇	◇	◇	*									
1x2 1/2	25.40x63.50			◇	◇	◇	◇	◇	◇	◇	◇	◇	*									
1x3	25.40x76.20			◇	◇	◇	◇	◇	◇	◇	◇	◇	*									
	30.00x40.00			◇	◇	◇	◇	◇	◇	◇	◇	◇	*									
	30.00x50.00			◇	◇	◇	◇	◇	◇	◇	◇	◇	*									
	30.00x60.00			◇	◇	◇	◇	◇	◇	◇	◇	◇	*									
	30.00x70.00			◇	◇	◇	◇	◇	◇	◇	◇	◇	*									
1 1/2x2	38.10x50.80			◇	◇	◇	◇	◇	◇	◇	◇	◇	*									
1 1/2x2 1/2	38.10x63.50			◇	◇	◇	◇	◇	◇	◇	◇	◇	*									
1 1/2x3	38.10x76.20			◇	◇	◇	◇	◇	◇	◇	◇	◇	*									



Thickness Outside Diameter		0.80 0.89	0.90	1.00	1.07	1.20	1.24	1.50	1.65	2.00 2.11	2.50	2.70 2.77	3.00 3.05	4.00	4.50 4.55	5.00	6.00	6.30 6.35	7.00	8.00	9.53		
		20GA			19GA		18GA		16GA	14GA		12GA	11GA		7GA								
INCH	MM																						
	40.00x50.00					◇	◇	◇	◇	◇	◇	◇	*										
	40.00x60.00					◇	◇	◇	◇	◇	◇	◇	*	*	*	*	*						
	40.00x80.00					◇	◇	◇	◇	◇	◇	◇	*	*	*	*	*						
	40.00x100.00					◇	◇	◇	◇	◇	◇	◇	*	*	*	*	*						
	50.00x75.00							◇	◇	◇	◇	◇	*	*	*	*	*						
	50.00x100.00							◇	◇	◇	◇	◇	*	*	*	*	*						
	50.00x127.00									◇	◇	◇	*	*	*	*	*						
	50.00x150.00									◇	◇	◇	*	*	*	*	*						
2x3	50.80x76.20							◇	◇	◇	◇	◇	*	*	*	*	*	*					
2x4	50.80x101.60							◇	◇	◇	◇	◇	*	*	*	*	*	*	*				
2x5	50.80x127.00									◇	◇	◇	*	*	*	*	*	*	*				
2x6	50.80x152.40									◇	◇	◇	*	*	*	*	*	*	*				
	60.00x80.00							◇	◇	◇	◇	◇	*	*	*	*	*	*					
	60.00x100.00							◇	◇	◇	◇	◇	*	*	*	*	*	*					
	60.00x120.00							◇	◇	◇	◇	◇	*	*	*	*	*	*					
	75.00x100.00							◇	◇	◇	◇	◇	*	*	*	*	*	*	*				
	75.00x150.00							◇	◇	◇	◇	◇	*	*	*	*	*	*	*				
3x4	76.20x101.60									◇	◇	◇	*	*	*	*	*	*	*				
3x5	76.20x127.00									◇	◇	◇	*	*	*	*	*	*	*				
3x6	76.20x152.40									◇	◇	◇	*	*	*	*	*	*	*				
	80.00x100.00									◇	◇	◇	*	*	*	*	*	*	*				
	80.00x120.00									◇	◇	◇	*	*	*	*	*	*	*				
	100.00x150.00									◇	◇	◇	*	*	*	*	*	*	*	*	*	*	*
	100.00x200.00									◇	◇	◇	*	*	*	*	*	*	*	*	*	*	*
4x6	101.60x152.40									◇	◇	◇	*	*	*	*	*	*	*	*	*	*	*
4x8	101.60x203.20									◇	◇	◇	*	*	*	*	*	*	*	*	*	*	*
	150.00x200.00												*	*	*	*	*	*	*	*	*	*	*
6x8	152.40x203.20												*	*	*	*	*	*	*	*	*	*	*
Remark	<p>- Marking: Within The Production Capability</p> <p>- The Other Outside Diameter and Wall Thickness Subject To The Approval Of Vendor And Purchaser.</p> <p>- Cold Roll Material: Thickness 0.4~3.0mm</p> <p>- Hot Roll Material: Thickness 2.0~8.0mm</p> <p>(◇): Polish 180G/320G/400G/600G    (*): Polish 180G</p>																						

• Application: It is widely used on machinery, medical devices, sport and fitness equipment, coatings, high-speed trains, automotive, furniture, interior decorations etc.

## STAINLESS STEEL WELDED PIPES

• ASTM A312, A778 (ASME B36.19M/ASME B36.10M)

Nominal Outside Diameter		Outside Diameter	Nominal Wall Thickness (MM)			
NPS	INCH	MM	SCH-5S	SCH-10S	SCH-40S	SCH-20
8	1/4"	13.72	1.24	1.65	2.24	-
10	3/8"	17.15	1.24	1.65	2.31	-
15	1/2"	21.34	1.65	2.11	2.77	-
20	3/4"	26.67	1.65	2.11	2.87	-
25	1"	33.40	1.65	2.77	3.38	-
32	1 1/4"	42.16	1.65	2.77	3.56	-
40	1 1/2"	48.26	1.65	2.77	3.68	-
50	2"	60.33	1.65	2.77	3.91	-
65	2 1/2"	73.03	2.11	3.05	5.16	-
80	3"	88.90	2.11	3.05	5.49	-
90	3 1/2"	101.60	2.11	3.05	5.74	-
100	4"	114.30	2.11	3.05	6.02	-
125	5"	141.30	2.77	3.40	6.55	-
150	6"	168.28	2.77	3.40	7.11	-
200	8"	219.08	2.77	3.76	8.18	6.35
250	10"	273.05	3.40	4.19	9.27	6.35
300	12"	323.85	3.96	4.57	9.53	6.35
Remark	- Marking: Within The Production Capability - The Other Normal Outside Diameter and Wall Thickness Subject To The Approval Of Vendor And Purchaser.					



## WELDED AUSTENITIC STAINLESS STEEL SANITARY TUBING, TUBES FOR BOILER, HEAT-EXCHANGER, GENERAL SERVICE TUBING

• ASTM A249/A269/A270/EN10357, JIS G3463, DIN17457, DIN11850 GB/T 24593, AS 1528.1

Thickness		0.60	0.80	1.00	1.20	1.24	1.50	1.65	2.00
Outside Diameter									
(INCH)	(MM)					18GA		16GA	
3/8	9.53	○	○	○	○				
1/2	12.70	○	○	○	○				
3/4	15.90		◇	◇	◇	◇	◇		
3/4	19.05		★	★	★	★	★		
7/8	22.20		★	★	★	★	★		
1	25.40		★	★	★	★	★		
1 1/4	31.80		★	★	★	★	★		
	33.00		★	★	★	★	★		
	35.00		★	★	★	★	★		
1 1/2	38.10		★	★	★	★	★		
	40.00		★	★	★	★	★		
1 3/4	44.50		★	★	★	★	★		
2	50.80			★	★	★	★	★	★
2 1/2	63.50				★	★	★	★	★
3	76.20				★	★	★	★	★
	85.00						★	★	★
3 1/2	88.90						★	★	★
4	101.60						★	★	★
	105.00						★	★	★
	114.30						★	★	★
Remark	- Marking: Within The Production Capability - The Other Outside Diameter and Wall Thickness Subject To The Approval Of Vendor And Purchaser. (○): No Inside Polish and No Bead Remove    (◇): Bead Remove and No Inside Polish (★): Inside Polish and Bead Remove								

• Application: A 249, A 269 is widely used in construction of the high/super-high pressure power boiler, the superheated steam pipe, the boiler water pipe and the superheated tube for locomotive boiler.

# STAINLESS STEEL WELDED PIPES FOR PRESSURE PURPOSE

• EN 10217-7

Thickness Outside Diameter	Thickness																			
	1.00	1.20	1.50	1.60	2.00	2.30	2.50	2.60	2.70	2.90	3.00	3.05	3.20	3.50	3.60	4.00	4.50	5.00	5.60	6.00
6.00	◇																			
8.00	◇																			
9.53	◇	◇																		
10.00	◇	◇																		
12.0/12.7	◇	◇	◇																	
14.00	◇	◇	◇																	
15.0/15.9	◇	◇	◇	◇	◇															
17.0/17.2	◇	◇	◇	◇	◇	◇														
18.00	◇	◇	◇	◇	◇															
19.0/19.05	◇	◇	◇	◇	◇															
20.00	◇	◇	◇	◇	◇															
21.30	◇	◇	◇	◇	◇	◇	◇	◇												
22.00	◇	◇	◇	◇	◇															
24.20	◇	◇	◇	◇	◇															
25.0/25.4	◇	◇	◇	◇	◇	◇	◇													
26.90	◇	◇	◇	◇	◇	◇	◇	◇												
28.0/28.6	◇	◇	◇	◇	◇	◇	◇													
30.00	◇	◇	◇	◇	◇	◇	◇	◇	◇											
31.80	◇	◇	◇	◇	◇	◇	◇	◇	◇											
32.00	◇	◇	◇	◇	◇	◇	◇	◇	◇											
33.70	◇	◇	◇	◇	◇	◇	◇	◇	◇	*	*	*	*							
35.00	◇	◇	◇	◇	◇	◇	◇	◇	◇	*	*	*								
36.00	◇	◇	◇	◇	◇	◇	◇	◇	◇	*	*	*								
38.0/38.1	◇	◇	◇	◇	◇	◇	◇	◇	◇	*	*	*								
40.00	◇	◇	◇	◇	◇	◇	◇	◇	◇	*	*	*								
41.26	◇	◇	◇	◇	◇	◇	◇	◇	◇	*	*	*								
42.40	◇	◇	◇	◇	◇	◇	◇	◇	◇	*	*	*	*							
43.00	◇	◇	◇	◇	◇	◇	◇	◇	◇	*	*	*								
44.45/45.0	◇	◇	◇	◇	◇	◇	◇	◇	◇	*	*	*								
48.0/48.3	◇	◇	◇	◇	◇	◇	◇	◇	◇	*	*	*	*							
50.0/50.8	◇	◇	◇	◇	◇	◇	◇	◇	◇	*	*	*								
54.00	◇	◇	◇	◇	◇	◇	◇	◇	◇	*	*	*								
56.00	◇	◇	◇	◇	◇	◇	◇	◇	◇	*	*	*								
57.00	◇	◇	◇	◇	◇	◇	◇	◇	◇	*	*	*								
60.30	◇	◇	◇	◇	◇	◇	◇	◇	◇	*	*	*	*	*	*					
63.50	◇	◇	◇	◇	◇	◇	◇	◇	◇	*	*	*								
70.00	◇	◇	◇	◇	◇	◇	◇	◇	◇	*	*	*								
73.0/73.03	◇	◇	◇	◇	◇	◇	◇	◇	◇	*	*	*								
76.2/76.1	◇	◇	◇	◇	◇	◇	◇	◇	◇	*	*	*								
80.00	◇	◇	◇	◇	◇	◇	◇	◇	◇	*	*	*								
83.00	◇	◇	◇	◇	◇	◇	◇	◇	◇	*	*	*								
86.90		◇	◇	◇	◇	◇	◇	◇	◇	*	*	*								
88.90		◇	◇	◇	◇	◇	◇	◇	◇	*	*	*								
96.00		◇	◇	◇	◇	◇	◇	◇	◇	*	*	*								
101.60			◇	◇	◇	◇	◇	◇	◇	*	*	*								
104.00			◇	◇	◇	◇	◇	◇	◇	*	*	*								
114.0/114.3			◇	◇	◇	◇	◇	◇	◇	*	*	*								
127.00			◇	◇	◇	◇	◇	◇	◇	*	*	*								
139.70			◇	◇	◇	◇	◇	◇	◇	*	*	*								
152.40					◇	◇	◇	◇	◇	*	*	*	*	*						
154.00					◇	◇	◇	◇	◇	*	*	*	*	*						
168.0/168.3					◇	◇	◇	◇	◇	*	*	*	*	*	*	*	*	*	*	*



Thickness Outside Diameter	1.00	1.20	1.50	1.60	2.00	2.30	2.50	2.60	2.70	2.90	3.00	3.05	3.20	3.50	3.60	4.00	4.50	5.00	5.60	6.00	
	(mm)	(mm)	(mm)	(mm)	(mm)	(mm)	(mm)	(mm)	(mm)	(mm)	(mm)	(mm)	(mm)	(mm)	(mm)	(mm)	(mm)	(mm)	(mm)	(mm)	(mm)
203.00					◇	◇	◇	◇	◇	*	*	*	*	*	*	*	*	*	*	*	*
219.0/219.1					◇	◇	◇	◇	◇	*	*	*	*	*	*	*	*	*	*	*	*
254.00							**	**	**	**	**	**	**	**	**	**	**	**	**	**	**
273.00									**	**	**	**	**	**	**	**	**	**	**	**	**
323.00									**	**	**	**	**	**	**	**	**	**	**	**	**
Remark	- Marking: Within The Production Capability - The Other Outside Diameter and Wall Thickness Subject To The Approval Of Vendor And Purchaser. - Cold Roll Material: Thickness 0.4~3.0mm - Hot Roll Material: Thickness 2.0~6.0mm (◇): Polish 180G/320G/400G/600G      (*): Polish 180G      (**): Mill Finish/MF																				

• Application: The product are widely applied for the chemical, paper-making, energy, sewage, engineering etc.

### STAINLESS STEEL WELDED SLOTTED TUBES

NO.	SIZE		Slotted		WALL THICKNESS			
	(MM)	(MM)	(MM)	(MM)	1.00	1.20	1.50	2.00
					(MM)	(MM)	(MM)	(MM)
1	38.10		15	15				
2	50.80		15	15				
3	40.00	40.00	15	15				
4	50.00	50.00	15	15				
5	40.00	60.00	15	15				
6	40	40	24	24				
Remark	- Marking: Within The Production Capability - The Other Subject To The Approval Of Vendor And Purchaser.							

### STAINLESS STEEL WELDED EMBOSSED TUBES

Thickness Outside Diameter	0.4	0.5	0.60	0.70	0.80	0.90	1.00	1.20	1.50
	(inch)	(mm)	(mm)	(mm)	(mm)	(mm)	(mm)	(mm)	(mm)
25.00									
32.00									
38.00									
50.80									
60.00									
76.00									
Remark	- Marking: Within The Production Capability - The Other Subject To The Approval Of Vendor And Purchaser.								

### STAINLESS STEEL WELDED PATTERN TUBES

Thickness Outside Diameter	0.4	0.5	0.60	0.70	0.80	0.90	1.00	1.20	1.50
	(inch)	(mm)	(mm)	(mm)	(mm)	(mm)	(mm)	(mm)	(mm)
32.00									
38.00									
50.80									
60.00									
Remark	- Marking: Within The Production Capability - The Other Subject To The Approval Of Vendor And Purchaser.								

**SEAMLESS AUSTENITIC STAINLESS STEEL TUBES FOR INSTRUMENTATION TUBING, BOILER, HEAT-EXCHANGER & GENERAL SERVICE TUBING**

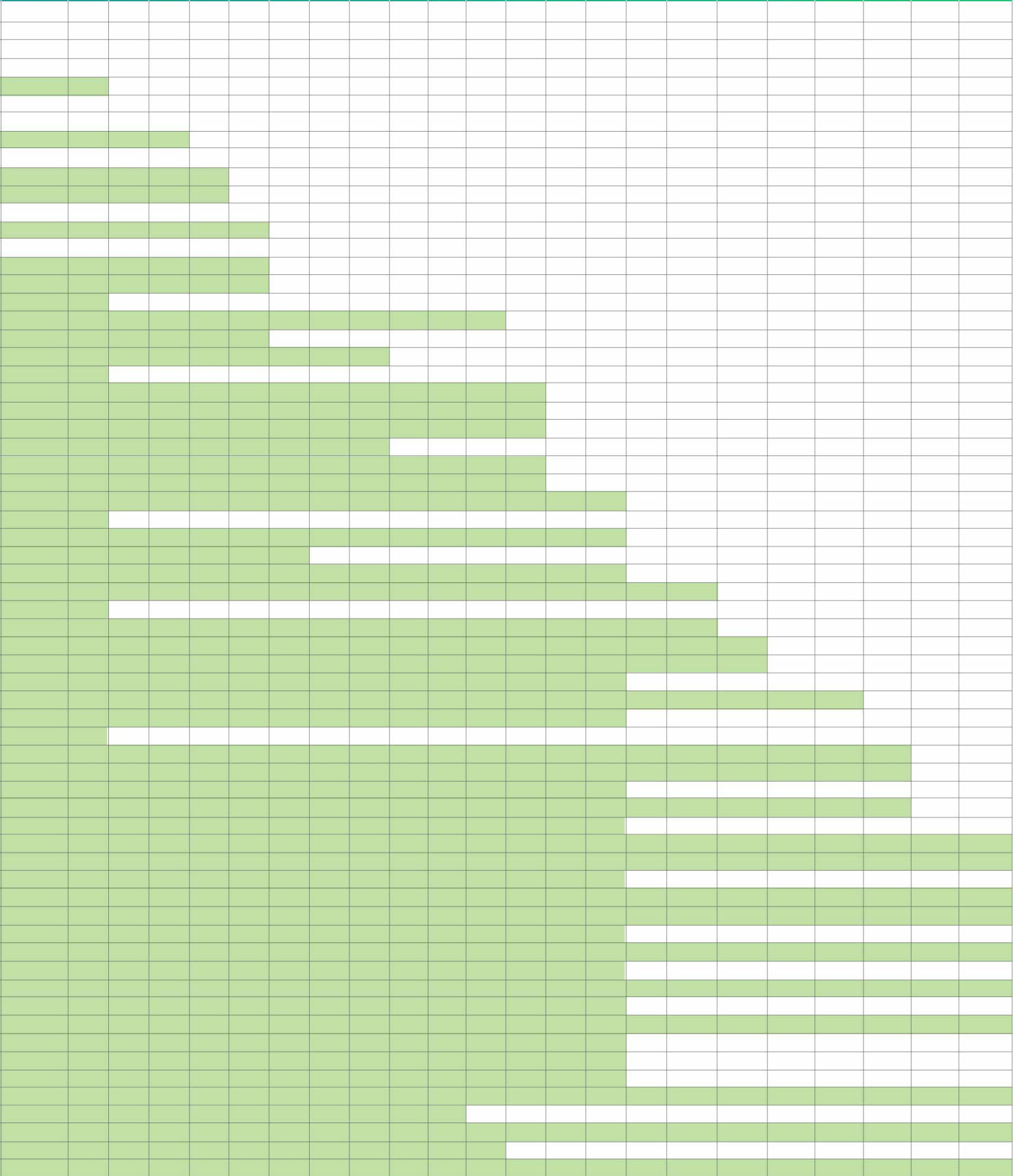
• ASTM A269/A213, EN10216-5

Thickness		0.89	1.00	1.20	1.24	1.25	1.50	1.60	1.65	2.00	2.11	2.30	2.50	2.60	2.77	2.90	3.00	3.20	3.40	3.50	3.60	3.76	
Outside Diameter	Thickness	18GA				16GA			14GA			12GA											
	(inch)	(mm)																					
3/8	9.53																						
	10.00																						
	10.02																						
	11.00																						
	12.00																						
1/2	12.50																						
	12.70																						
	13.50																						
	13.72																						
	14.00																						
3/4-	15.00																						
	15.90																						
	16.00																						
	17.00																						
	17.20																						
3/4	18.00																						
	19.05																						
	20.00																						
	21.30																						
	22.00																						
	24.00																						
	25.00																						
	25.40																						
	26.90																						
	28.00																						
	30.00																						
	31.80																						
	32.00																						
	33.00																						
	33.70																						
34.00																							
35.00																							
38.00																							
38.10																							
40.00																							
1 2/3	42.40																						
	44.50																						
	45.00																						
	48.30																						
	50.00																						
	50.80																						
	51.00																						
	54.00																						
	55.00																						
	57.00																						
60.00																							
60.30																							
2 1/2	63.50																						
	65.00																						
	70.00																						
	73.30																						
	75.00																						
	76.10																						
	80.00																						
	82.50																						
	85.00																						
	3 1/2	88.90																					
90.00																							
95.00																							
100.00																							
4	101.60																						
	102.00																						
	108.00																						
	110.00																						
	114.30																						

Remark - Marking: The Current Production Capability.  
 - The Other Outside Diameter and Wall Thickness Subject To The Approval Of Vendor And Purchaser.



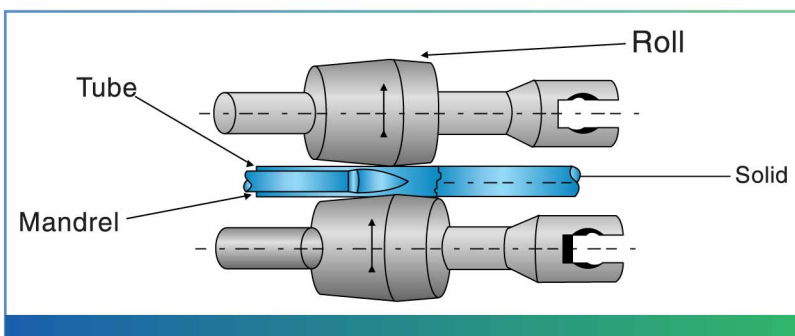
3.91	4.00	4.05	4.50	5.00	5.40	5.50	5.54	6.00	6.30	6.50	7.00	7.10	7.11	8.00	8.18	10.00	12.50	12.70	14.20	16.00	18.00	20.00
------	------	------	------	------	------	------	------	------	------	------	------	------	------	------	------	-------	-------	-------	-------	-------	-------	-------



## STAINLESS STEEL SEAMLESS PIPES

• ASTM A312 (ASME B36.19M/ASME B36.10M), EN10216-5

Nominal Outside Diameter		Outside Diameter		Nominal Wall Thickness (MM)		
NPS	MM	SCH-10S	SCH-40S	SCH-80S	SCH-80XS	SCH-20
1/8"	10.29	1.24	1.73	2.41	-	-
1/4"	13.72	1.65	2.24	3.02	3.02	-
3/8"	17.15	1.65	2.31	3.20	3.20	-
1/2"	21.34	2.11	2.77	3.73	3.73	-
3/4"	26.67	2.11	2.87	3.91	3.91	-
1"	33.40	2.77	3.38	4.55	4.55	-
1 1/4"	42.16	2.77	3.56	4.85	4.85	-
1 1/2"	48.26	2.77	3.68	5.08	5.08	-
2"	60.33	2.77	3.91	5.54	5.54	-
2 1/2"	73.03	3.05	5.16	7.01	7.01	-
3"	88.90	3.05	5.49	7.62	7.62	-
3 1/2"	101.60	3.05	5.74	8.08	8.08	-
4"	114.30	3.05	6.02	8.56	8.56	-
5"	141.30	3.40	6.55	9.53	9.53	-
6"	168.28	3.40	7.11	10.97	10.97	-
8"	219.08	3.76	8.18	12.70	12.70	6.35
10"	273.05	4.19	9.27	12.70	12.70	6.35
12"	323.85	4.57	9.53	12.70	12.70	6.35
Remark	- Marking: Within The Production Capability - The Other Normal Outside Diameter and Wall Thickness Subject To The Approval Of Vendor And Purchaser.					





## WELDED AUSTENITIC STAINLESS STEEL TUBES FOR HEAT-EXCHANGER, GENERAL SERVICE AND SANTIRY TUBING

ASTM A249/A269/A270

Item Standard	Outside Diameter	Thickness	Length
ASTM A249	$\leq 25 \text{ mm}$ $+ 0.10 \text{ mm}$ $- 0.11 \text{ mm}$ $\geq 25 \text{ mm}$ $\leq 40 \text{ mm}$ $+ 0.15 \text{ mm}$ $> 40 \text{ mm}$ $< 50 \text{ mm}$ $\pm 0.20 \text{ mm}$ $\geq 50 \text{ mm}$ $< 65 \text{ mm}$ $\pm 0.25 \text{ mm}$ $\geq 65 \text{ mm}$ $< 75 \text{ mm}$ $\pm 0.30 \text{ mm}$ $\geq 75 \text{ mm}$ $\leq 100 \text{ mm}$ $\pm 0.38 \text{ mm}$ $> 100 \text{ mm}$ $\leq 200 \text{ mm}$ $+ 0.38 \text{ mm}$ $- 0.64 \text{ mm}$ $> 200 \text{ mm}$ $\leq 225 \text{ mm}$ $+ 0.38 \text{ mm}$ $- 1.14 \text{ mm}$	$\pm 10\%$	$\text{OD} < 50.8 \text{ mm} + 3.0 \text{ mm}$ $- 0 \text{ mm}$ $\text{OD} \geq 50.8 \text{ mm} + 5.0 \text{ mm}$ $- 0 \text{ mm}$
ASTM A269	$< 38.1 \text{ mm}$ $\pm 0.13 \text{ mm}$ $\geq 38.1 \text{ mm}$ $< 88.9 \text{ mm}$ $\pm 0.25 \text{ mm}$ $\geq 88.9 \text{ mm}$ $< 139.7 \text{ mm}$ $\pm 0.38 \text{ mm}$ $\geq 140 \text{ mm}$ $< 203.2 \text{ mm}$ $\pm 0.76 \text{ mm}$	$\text{OD} < 12.7 \text{ mm} \pm 15\%$ $\text{OD} \leq 12.7 \text{ mm} \pm 10\%$	$\text{OD} < 38.1 \text{ mm} + 3.2 \text{ mm}$ $- 0 \text{ mm}$ $\text{OD} \geq 38.1 \text{ mm} + 4.8 \text{ mm}$ $- 0 \text{ mm}$
ASTM A270	$\leq 25 \text{ mm}$ $\pm 0.13 \text{ mm}$ $> 25 \text{ mm}$ $\leq 50 \text{ mm}$ $\pm 0.20 \text{ mm}$ $> 50 \text{ mm}$ $\leq 75 \text{ mm}$ $\pm 0.25 \text{ mm}$ $> 75 \text{ mm}$ $\leq 100 \text{ mm}$ $\pm 0.38 \text{ mm}$ $> 100 \text{ mm}$ $< 140 \text{ mm}$ $\pm 0.38 \text{ mm}$	$\pm 12.5\%$	$\text{OD} \leq 100 \text{ mm} + 3 \text{ mm}$ $- 0 \text{ mm}$ $\text{OD} > 100 \text{ mm} + 5 \text{ mm}$ $- 0 \text{ mm}$

## WELDED STAINLESS TUBES FOR PRESSURE PURPOSE

EN10217-7

	Outside Diameter	Thickness	Length
$D \leq 168.3$	$D3 \pm 0.008$ or $\pm 0.3 \text{ mm}$ Whichever is the greater	$T3 \pm 0.1$ or $\pm 0.2 \text{ mm}$ Whichever is the greater	$L \leq 6000 + 5 \text{ mm} \text{ ' - } 0 \text{ mm}$
	$D4 \pm 0.005$ or $\pm 0.1 \text{ mm}$ Whichever is the greater		$6000 < L \leq 12000 + 10 \text{ mm} \text{ ' - } 0 \text{ mm}$
$D > 168.3$	$D2 \pm 1.00\%$		$L > 12000 + \text{by agreement} \text{ ' - } 0 \text{ mm}$

## STAINLESS STEEL PIPE

ASTM A312

Item Standard	Outside Diameter				Thickness	Length
ASTM A312		≤ 48.26 mm	+ 0.40 mm	- 0.80 mm	(Nominal Thickness) ± 12.5%"	"+6.0mm -0mm"
	> 48.26 mm	≤ 114.3 mm	± 0.80 mm			
	> 114.3 mm	≤ 219.08 mm	+ 1.60 mm	- 0.80 mm		
	> 219.08 mm	≤ 457.2 mm	+ 2.40 mm	- 0.80 mm		
	> 457.2 mm	≤ 660.4 mm	+ 3.20 mm	- 0.80 mm		
	> 660.4 mm	≤ 863.6 mm	+ 4.00 mm	- 0.80 mm		
	> 863.6 mm		+ 4.80 mm	- 0.80 mm		

## STAINLESS STEEL FOR MECHANICAL & STRUCTURAL PUPOSE

ASTM A554

Item Standard	Outside Diameter			Thickness	Length
ASTM A554		< 12.7 mm	± 0.10 mm	± 10%	Definite Cut Lengths
	≥ 12.7 mm	≤ 25.4 mm	± 0.13 mm		
	> 25.4 mm	≤ 38.1 mm	± 0.20 mm		
	> 38.1 mm	≤ 50.8 mm	± 0.25 mm		
	> 50.8 mm	≤ 63.5 mm	± 0.30 mm		
	> 63.5 mm	≤ 88.9 mm	± 0.36 mm		
	> 88.9 mm	≤ 127.0 mm	± 0.51 mm		
	> 127.0 mm	≤ 190.5 mm	± 0.64 mm		
> 190.5 mm	≤ 406.4 mm each 1" OD increase ± 0.03mm				

## TABLE OF THE CHEMICAL COMPOSITION OF STAINLESS STEEL

Grade		Chemical Composition(%)							
ASTM	DIN/EN	C	Mn	P	S	Si	Ni	Cr	Mo
304	1.4301	≤ 0.08	≤ 2.0	≤ 0.045	≤ 0.03	≤ 1.00	8.0~11.0	18.0~20.0	
304L	1.4307	≤ 0.035	≤ 2.0	≤ 0.045	≤ 0.03	≤ 1.00	8.0~13.0	18.0~20.0	
316	1.4401	≤ 0.08	≤ 2.0	≤ 0.045	≤ 0.03	≤ 1.00	10.0~14.0	16.0~18.0	2.0~3.0
316L	1.4404	≤ 0.035	≤ 2.0	≤ 0.045	≤ 0.03	≤ 1.00	10.0~14.0	16.0~18.0	2.0~3.0
321	1.4541	≤ 0.08	≤ 2.0	≤ 0.045	≤ 0.03	≤ 1.00	9.0~12.0	17.0~19.0	



## STAINLESS STEEL SOLUTION ANNEALING CONDITION

ASTM	
Grade	Annealing Requirement
TP 304	1040°C min., Water Quenching
TP 304L	
TP 316	
TP 316L	

## CALCULATING FORMULA FOR THE VALUE OF MASS

Grade		Basic Mass(kg/mm.m <sup>2</sup> )	Formula
AISI 304	AISI 304L	7.93	W=0.02504t(D-t)
TP 304	TP 304L		
AISI 316	AISI 316L	7.98	W=0.02507t(D-t)
TP 316	TP 316L		

W: Weight(Kg/m)

D: Outside Diameter(mm)

t: Wall thickness(mm)

## APPLICATION

Item	Application
Stainless Steel Welded/ Seamless Steel Pipe/Tube	Petro-Chemical, Food and Machinery Industry, Construction for Building, Environment, Fire and Telecom etc

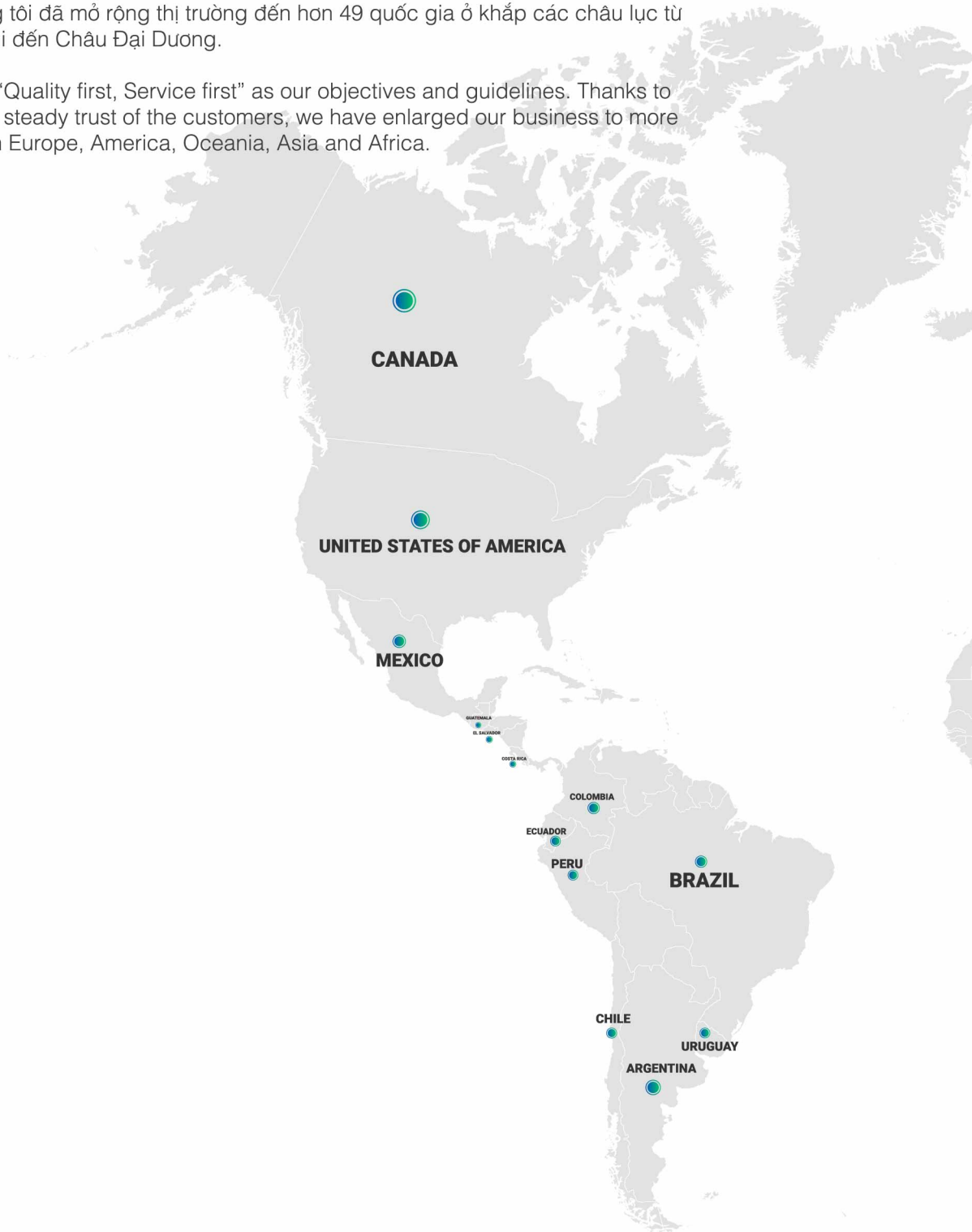
# EXTENSIVE DISTRIBUTION SYSTEM

## HỆ THỐNG PHÂN PHỐI RỘNG KHẮP

---

Quảng Thượng luôn giữ vững “Chất lượng hàng đầu, Dịch vụ tốt nhất” như là phương châm và mục tiêu của chúng tôi. Nhờ sự ủng hộ mạnh mẽ và tin cậy vững chắc của Quý Khách hàng, chúng tôi đã mở rộng thị trường đến hơn 49 quốc gia ở khắp các châu lục từ Châu Âu, Mỹ, Á, Phi đến Châu Đại Dương.

Vinlong Inox takes “Quality first, Service first” as our objectives and guidelines. Thanks to strong support and steady trust of the customers, we have enlarged our business to more than 49 countries in Europe, America, Oceania, Asia and Africa.









We are connecting the world

**Vinlong Stainless Steel (Vietnam) Co., Ltd**

**ADD** 131C1, 131D Long Giang Industrial Park, Tan Lap 1 commune,  
Tan Phuoc district, Tien Giang Province, Viet Nam

**TEL** (+84 73) 364 2555

**FAX** (+84 73) 364 2557

**EMAIL** [info@vinlonginox.vn](mailto:info@vinlonginox.vn)

**WEBSITE** [www.vinlonginox.vn](http://www.vinlonginox.vn)