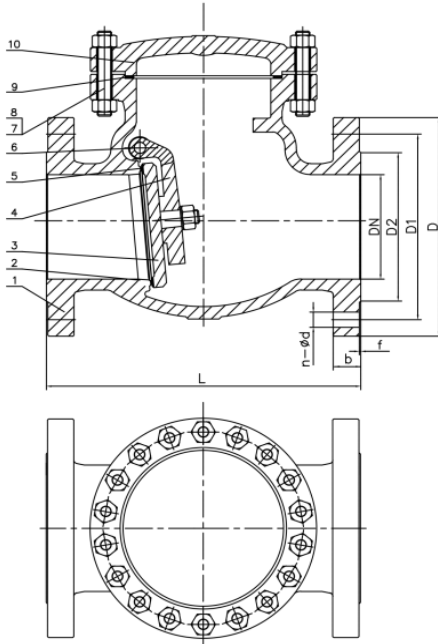


DUCTILE IRON EPOXY SWING CHECK VALVE PN16

Model: DI-SC-PN16



Technical Data

STANDARD MATERIALS OF MAIN PARTS

NO	NAME	MATERIAL
1	BODY	DUCTILE IRON
2	SEAT	BRASS
3	DISC	DUCTILE IRON
4	ROCKING ARM	CS
5	DISC SEALING	BRASS
6	PIN	SS410
7	NUT	CS
8	STUD	CS
9	SPACER	SS+GRAPHITE
10	BONNET	DUCTILE IRON

Specification Standards:

Face to face is according to DIN3202 F6

Flange drilled is according to DIN PN16

Working Pressure: PN16

Test Pressure Shell: 24 Kgf/cm²

Seat: 17.6 Kgf/cm²

Working Temperature: Max 80°C

Applicable Medium: 'Water

DIMENSIONS: (mm)

DN	SIZE	DIN3202 F6		DIN PN16				
		L	D	D1	D2	b	f	n-Φd
DN50	2"	200	165	125	99	19	3	4-Φ19
DN65	2 1/2"	240	185	145	118	19	3	4-Φ19
DN80	3"	260	200	160	132	19	3	8-Φ19
DN100	4"	300	220	180	156	19	3	8-Φ19
DN125	5"	350	250	210	184	19	3	8-Φ19
DN150	6"	400	285	240	211	20	3	8-Φ23
DN200	8"	500	340	295	274	22	3	12-Φ23
DN250	10"	600	405	355	319	24.5	3	12-Φ28
DN300	12"	700	460	410	370	26.5	4	12-Φ28